

# LAMBTON GROUP POLICE SERVICES BOARD

Year End Report

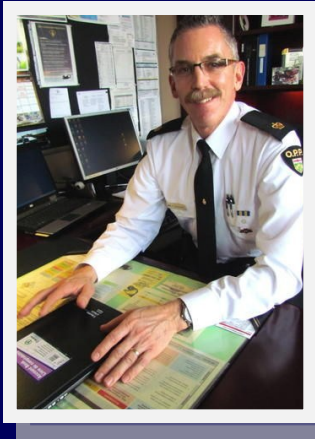
2013



Detachment Commander  
Inspector Scott JANSSENS

# LAMBTON COUNTY OPP DETACHMENT 2013

## Message from the Detachment Commander



Over the last year there have been many positive changes throughout the detachment and the organization as a whole. New members have arrived and experienced ones have moved on to other areas of the Province. As I have said before, change is good as it keeps us moving forward looking for new opportunities.

In 2013 the Lambton County OPP established a Vision Statement, "TO ENSURE LAMBTON DETACHMENT HAS A POSITIVE WORK ENVIRONMENT, WHERE EMPLOYEE DEVELOPMENT IS MAXIMIZED, DECISION MAKING ENCOURAGED, AND EFFECTIVE COMMUNICATION SKILLS ARE PRACTICED." Along with the Vision Statement, three objectives were established;

- ⇒ ENHANCED COMMUNICATIONS
- ⇒ OPERATIONAL EFFICIENCIES
- ⇒ SUCCESSION PLANNING

We have put a number of new processes in place over the last year after we have filled some supervisory positions, but as Detachment Commander I believe we need to focus on improving, strengthening and developing new ideas in these 3 key areas to ensure the success of the Lambton County OPP. I have asked all front line members, supervisors and administrative staff for their continued support to develop new ideas that will provide us with continuous improvement as we move forward with positive changes.

**B. Scott Janssens**  
**Inspector # 6516**  
**Detachment Commander**  
**Lambton Detachment**  
**Office # 519- 882- 1011**

# LAMBTON COUNTY OPP DETACHMENT AREA



Lambton Detachment

# Lambton Manpower & Overtime



## Acronyms Defined

**LLA** - Liquor Licence Act  
**CDSA** - Controlled Drug & Substance Act  
**MVC** - Motor Vehicle Collision  
**MHA** - Mental Health Act  
**Personnel Shortage** - Coverage for Vacation, Short Term Sickness, Maternity/Paternity Leave, Bereavement

## 6M04 LAMBTON PRESSURES - 4th Quarter 2013

### October 2013

Patrol: Cruiser - 83 hrs.; Patrol: Foot - 22 hrs.; Transporting Servicing - 1 hrs.; General Admin - 14.5 hrs.; Murder Frist Degree - 4.5 hrs.; Assaults - 55 hrs. (**Court 39.5**); Robbery - 33 hrs. (**Court 31**); Break & Enters - 25 hrs. (**Court 5**); Theft - 22.5 hrs. (**Court 20.5**); Weapons Offenses 3 hrs.; Bail Violations - 11 hrs. (**Court 9**); Mischief - 1.5 hrs.; Criminal Harassment - 7 hrs. (**Court 2**); CDSA - 42.25 hrs. (**Court 5**); MHA - 9.5 hrs. (**Court 5**); Dangerous Operation of Motor Vehicle - 4 hrs.; Fail To Stop - 1 hrs.; TTCI PI Investigation - 4.5 hrs.; Reconstructionist OPP - .5 hrs.; LLA/Imp/B Tech - 18.75 hrs. (**Court - 1.5**); Suspended Driver - 4.5 hrs. (**Court 4.5**); MVC's - 37.5 hrs. (**Court 10**); Traffic Complaints - 8 hrs.; Death, Suicide & Missing Persons Invest - 43.75 hrs.; Domestic Disputes - 10.75 hrs. (**Court 3**); False Alarms/911 Hang ups - 5.75 hrs.; Keep The Peace - 1 hrs.; Trouble With Youth - 6 hrs.; Suspicious Persons/Vehicles - 1 hrs.; Security Detail (other than Paid Duty) - 12 hrs.; Total Court Hours - 226.5 hrs. (POA Court - 90.5; Criminal Court 136)

### November 2013

Patrol: Cruiser - 94 hrs.; Patrol: Foot - 7.5 hrs.; Transporting Servicing - hrs.; General Admin - 12 hrs.; Assaults - 59 hrs. (**Court 29.5**); Break and Enter - 13.5 hrs.; Have Stolen Goods - 21.5 hrs.; Bail Violations - 7 hrs.; Mischief - 2.25 hrs.; Criminal Harassment - 1 hrs.; CDSA - 6 hrs.; MHA - 5 hrs.; Reconstructionist OPP - 1.5 hrs.; LLA/Imp/B Tech - 14.5 hrs. (**Court - 9**); Suspended Driver - 10.75 hrs. (**Court 8.75**); MVC's - 12.75 hrs.; Non-MVC TR Invest 18.75 hrs. (**Court - 17.75**); Traffic Complaints - 1.75 hrs.; Death, Suicide & Missing Persons Invest - 22.25 hrs.; Domestic Disputes - 10 hrs. (**Court**); False Alarms/911 Hang ups - 4.75 hrs.; Found/Recovered Property - 5 hrs.; Animal Complaints - 2.5 hrs.; Trouble With Youth - 3.25 hrs.; Suspicious Persons/Vehicles - 1 hrs.; Total Court Hours - 131.25 hrs. (POA Court - 52.25; Criminal Court - 79)

### December 2013

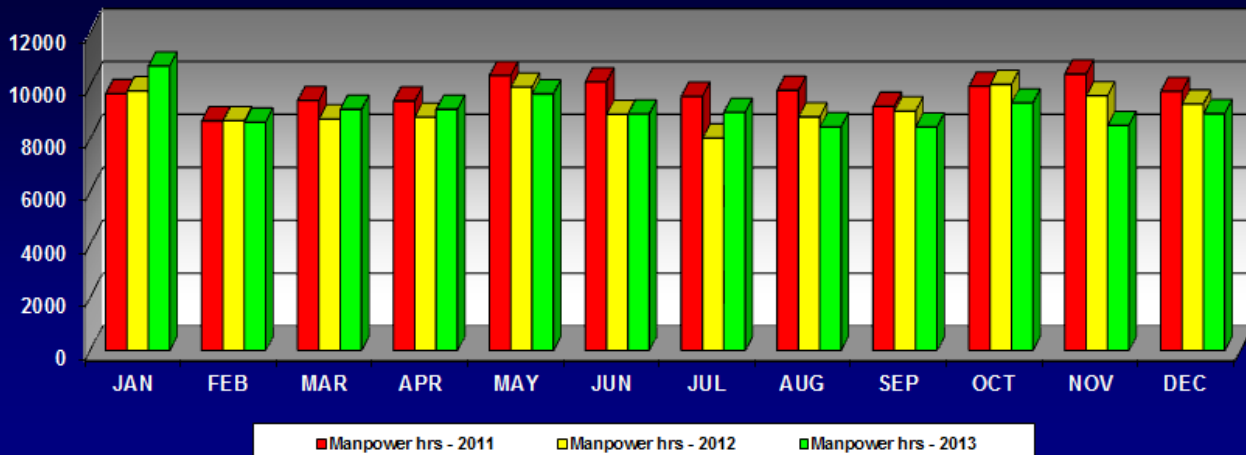
Patrol: Cruiser - 150.75 hrs.; Patrol: Foot - 7.75 hrs.; Transporting Servicing - 5 hrs.; General Admin - 10 hrs.; Assaults - 158.5 hrs. (**Court 48.5**); Break and Enter - 22 hrs.; Theft - 3 hrs.; Have Stolen Goods - 3 hrs.; Fraud - 15.75 (**Court 14.75**); Bail Violations - 36.75 hrs.; Mischief - 18 hrs. (**Court 15**); Criminal Harassment - 7.25 hrs.; CDSA - 12.5 (**Court 3.5**) hrs.; MHA - 12.5 hrs.; LLA/Imp/B Tech - 22.75 hrs. (**Court - 9**); Suspended Driver - 8.5 hrs. (**Court 8.5**); MVC's - 44 hrs. (**Court 14**); Traffic Complaints - 5 hrs.; Death, Suicide & Missing Persons Invest - 17.5 hrs.; Domestic Disputes - 25 hrs.; False Alarms/911 Hang ups - 11.5 hrs.; Keep The Peace - 4.25 hrs.; Animal Complaints - 2 hrs.; Suspicious Persons/Vehicles - 2 hrs.; Total Court Hours - 252 hrs. (POA Court - 109.75; Criminal Court - 142.25)

# Lambton Manpower & Overtime

## 6M04 LAMBTON MANPOWER HOURS

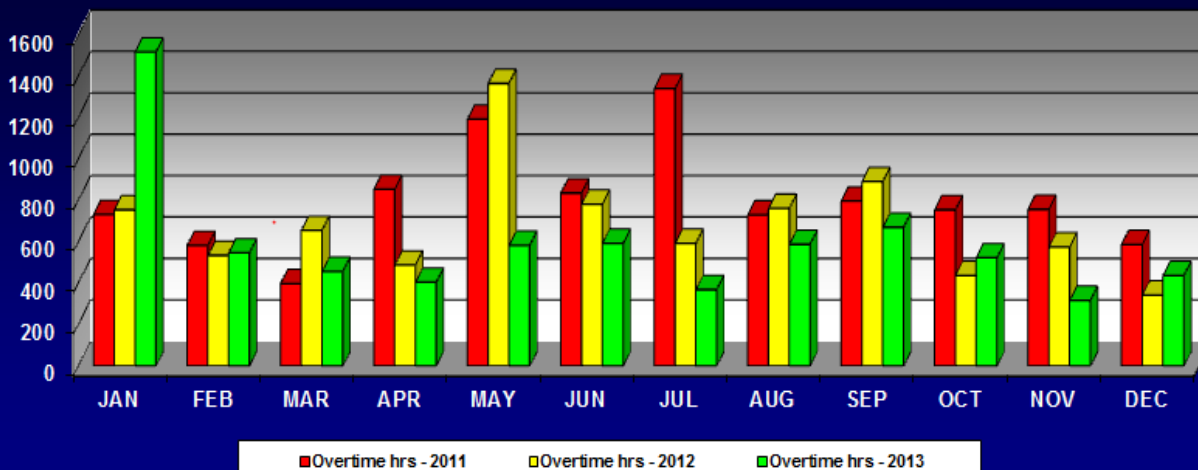
(minimum required per month 8325)

	JAN	FEB	MAR	APR	MAY	JUN	JUL	AUG	SEP	OCT	NOV	DEC	Totals
Manpower hrs. - 2011	9707	8683	9450	9429	10394	10152	9605	9831	9227	9986	10448	9794	116706
Manpower hrs. - 2012	9816	8683	8752	8820	9956	8925	8031	8831	9053	10058	9627	9317	109868
Manpower hrs. - 2013	10751	8630	9113	9113	9699	8942	9001	8453	8445	9359	8505	8949	108957



## 6M04 LAMBTON OVERTIME HOURS

	JAN	FEB	MAR	APR	MAY	JUN	JUL	AUG	SEP	OCT	NOV	DEC	Totals
Overtime hrs. - 2011	731	581	397	853	1191	835	1340	729	795	754	756	586	9546
Overtime hrs. - 2012	754	533	654	487	1364	781	592	761	890	437	574	342	8166
Overtime hrs. - 2013	1516	545	456	404	582	592	368	587	669	522	316	437	6992

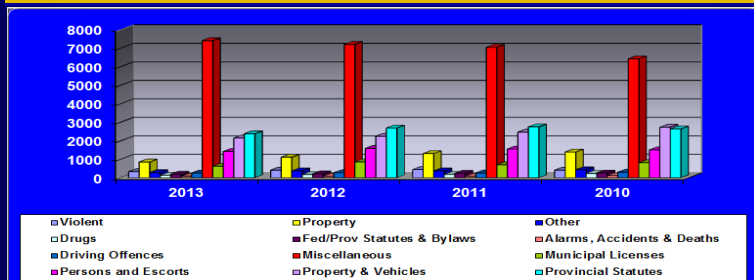




# Lambton Criminal Investigations

The Lambton Criminal Investigations Unit consists of nine Detective Constables under the immediate supervision of a Detective Sergeant who is a deployed Regional Headquarters member. All nine detectives concentrate on benchmark occurrences and provide support to the front line. The Lambton Criminal Investigations Unit have investigated many major crimes this year including a high profile Homicide, Sexual Assaults, Aggravated Assault, a Break and Enter with a Sexual Assault, a multi-jurisdictional fraud, investigated several domestic related offences and child pornography. Lambton Crime continues to have carriage of the CAUGHLIN Death Investigation. There was also the successful conclusion to a homicide investigation with a first degree murder conviction.

Types of Calls for Service - Yearly Totals	2013	2012	2011	2010
Violent	328	408	441	408
Property	844	1,105	1,306	1,386
Other	277	373	367	428
Drugs	128	170	183	233
Fed/Prov Statutes & Bylaws	185	206	234	254
Alarms, Accidents & Deaths	79	77	75	108
Driving Offences	252	269	256	297
Miscellaneous	7,402	7,198	7,042	6,427
Municipal Licenses	618	852	701	806
Persons and Escorts	1,417	1,584	1,547	1,504
Property & Vehicles	2,150	2,243	2,464	2,728
Provincial Statutes	2,374	2,682	2,745	2,631
<b>Total Calls for Service</b>	<b>16,054</b>	<b>17,167</b>	<b>17,361</b>	<b>17,210</b>



Year to Year Comparison	2013	2012	2011	2010
Sexual Assault	34	37	41	37
Assault-Level 1	130	139	165	176
Robbery	0	8	3	7
Break & Enter	154	215	219	250
Theft Over \$5,000 Motor Vehicle	0	0	30	22
Theft Under \$5,000 Motor Vehicle	0	0	21	20
Theft Under	229	312	382	372
Theft Over	19	14	13	23
Theft From Motor Vehicle Over \$5,000	1	1	0	1
Theft From Motor Vehicle Under \$5,000	58	70	140	136
Alarm -Master code	671	718	743	722
Alarms, Accidents & Deaths	79	77	75	108
Impaired Operation/Related Violations Causing Death	0	0	0	0
Impaired Operation/Related Violations Causing Bodily Harm	1	2	1	1
Impaired Operation (Drugs) - Causing Bodily Harm	1	0	0	0
Fail To Provide Breath Sample	4	5	4	11
Failure To comply or refusal (Drugs)	0	0	0	0
Fail To Provide Blood Sample	0	0	0	0
Impaired Operation (Drugs)	1	1	1	2
Impaired Operation/Related Violations/Over 80	64	67	62	71
Domestic Disturbance	344	370	409	424
Noise Complaint	219	239	165	200
Trouble with Youth	313	398	407	450
Liquor Licence Act	682	832	943	830
R.I.D.E.	762	559	530	495
Marine	26	34	32	25
Fed/Prov Statutes & Bylaws	185	206	234	254
Provincial Statutes	2,374	2,682	2,745	2,631
Drugs	128	170	183	233
Persons and Escorts	1,417	1,584	1,547	1,504
Mischief	207	278	279	299
Mischief to Religious Property motivated by Hate	0	0	0	0
<b>Totals</b>	<b>7,108</b>	<b>7,788</b>	<b>8,024</b>	<b>8,024</b>

# Lambton Traffic & Marine



2013 has been a productive year in all areas of Traffic and Marine management. Collisions are at a low while education and enforcement are up. The Traffic and Marine Unit consists of 1 Sergeant and 8 constables. This includes Traffic officers, Construction Reconstructionist, Technical Traffic Collision Investigator; Launch II trained Marine Officers and ERT members.

## 2013 Highlights include:

### Lower total collisions

- **566** collisions in 2013 down from **606** in 2012 and **629** in 2011
- Lower Property damage (**493** in 2013 - 534 in 2012 – 553 in 2011)
- Lower personal Injury (**66** in 2013 – 73 in 2012 – 84 in 2011)

### Suspensions, (3, 7, 45 and ADLS)

- 159 driver licence suspensions were issued by Lambton OPP in 2013
- 154 drivers were charged with driving under suspension in 2013

### Increased RIDE program

- 861 checks in 2013 up from 617 in 2012 and 601 in 2011
- OPP lead a large RIDE program including OPP, OPP Mobile Command Unit, Sarnia Police Service, CN Police, Chatham-Kent Police Service, MADD and Media

### Community Safety programs

- Media releases
- Speed Trailer deployment
- Community presentations for distracted driving other related traffic issues
- Bike Safety events
- Child safety seat restraint clinics
- RADAR / LIDAR enforcement (Long Weekends)
- Provincial Initiatives / Campaigns (12 total Campaigns)
- Commercial motor vehicle blitz
- School safety week with all schools using return to school directed patrols
- School bus fail to stop reports are sent directly from the bus company to the Traffic Unit to be investigated and charged when appropriate
- Messaging through Provincial Offence envelope stuffing
- Seasonal messaging utilizing both print and radio
- Traffic control during events, parades and protests
- OPP are active members with Lambton Safe Roads, MADD and various committees



# Lambton Traffic & Marine

## Marine Program

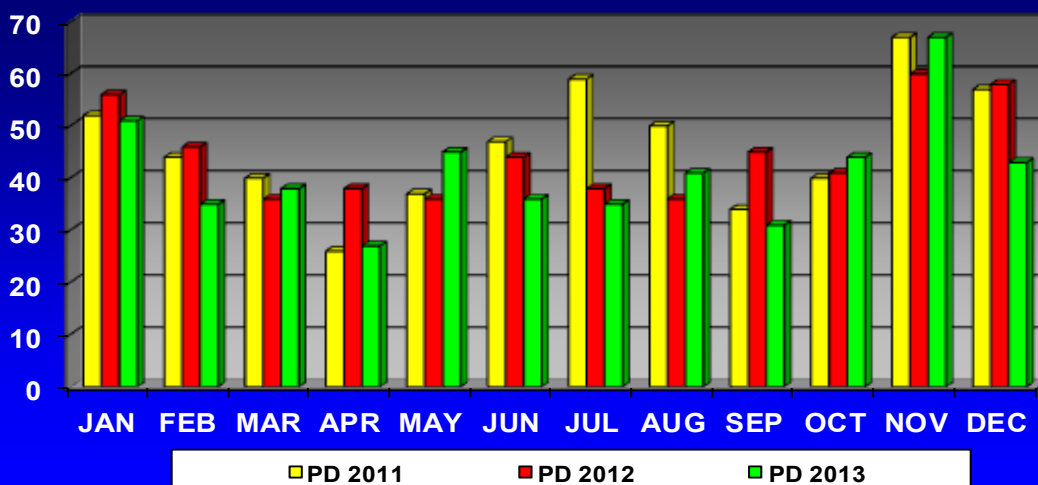
- 3 vessels include a 32 foot Hike, 23 foot Seaswirl and a 17 foot Harbourcraft
- 2 full time and 6 marine trained officers plus 3 marine students
- Grand Bend to Lake St. Clair
- Marine / Vessel safety is the top mandate including equipment and LLA infractions
- Many marine events including, May Long Weekend, Civic Long Weekend, Labour Day Weekend, St. Clair Off Shore Boat Races, Sarnia – Port Huron International Off Shore Races, Fireworks in Sarnia and Grand Bend, Cops / Kids and Canadian Tire event in Point Edward, Jobbie nooner x2, and the Floatdown under the Blue-water Bridge
- Search and Recovery including the assistance of the OPP Underwater Search and Recovery Unit and OPP Air support
- Assist Coast Guard, RCC Trenton in search and recovery efforts

## Property Damage Collisions

Steady decline continues year over year, (last 5 years) seeing **60 less** property damage collisions over a 3 year period.

Property damage collisions include parking lot and animal collisions.

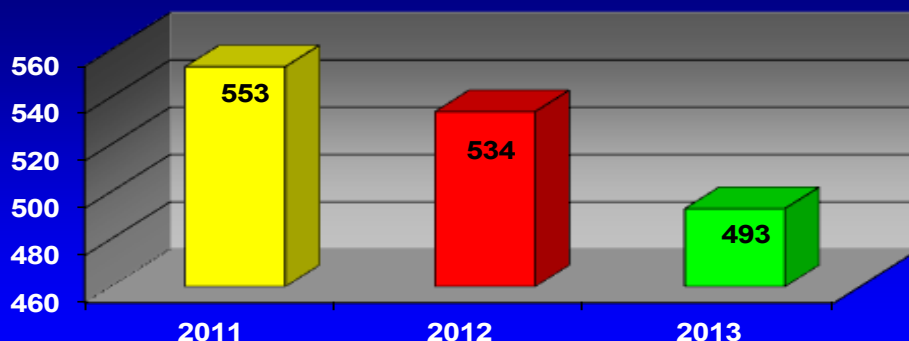
- Reportable collisions remain at \$1,000 collective damage
- Only the month of May showed a small increase in collisions
- Lambton Traffic continued to focus on winter driving for the 2013 – 14 season with literature, newspaper columns and radio ads
- Media messaging is being used for current traffic events or closures
- **173** collisions were **animal related**, many in November



	JAN	FEB	MAR	APR	MAY	JUN	JUL	AUG	SEP	OCT	NOV	DEC
PD 2011	52	44	40	26	37	47	59	50	34	40	67	57
PD 2012	56	46	36	38	36	44	38	36	45	41	59	59
PD 2013	51	35	38	27	45	36	35	41	32	44	66	43

# Lambton Traffic & Marine

## Total Property Damage Collisions



	2011	2012	2013
Total Property Damage Collisions	553	534	493

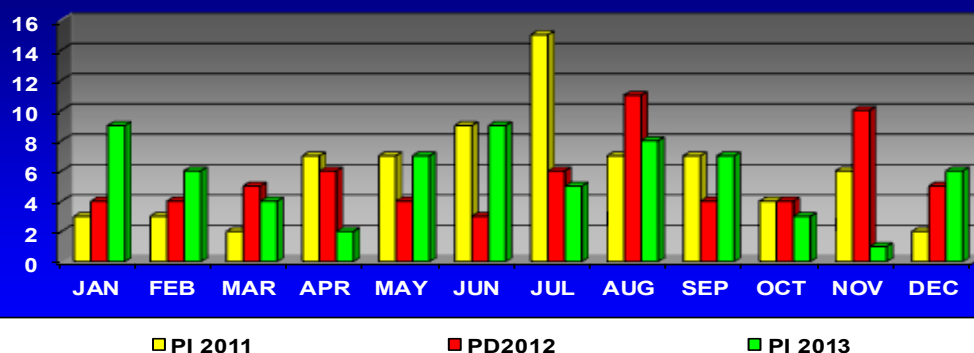
## Personal Injury Collisions

Unfortunately a reduction in the total personal injury collisions was not realized in 2013 but on a positive note there was not a discernable increase from 2012.

A downward trend remains across the province. A reduction in fatal and personal injury collisions is the focus of the OPP traffic management plan. The Big 4 Directed Patrol targets are designed to reduce these numbers further. (Impaired Driving, Aggressive Driving, Seatbelts and Speed)

- **Severity** - Injury collisions are not broken down to the severity of the injury and therefore if the injuries are less-er over time it is not measured.
- **CPTED** - is being conducted for all fatal collisions and in areas of concern to identify areas for improvement to avoid collisions.
- **Manufacturers** - incorporate airbags and sensors as standard equipment. Collision Information is downloaded from most vehicles which assist investigators to establish the cause for court and examine any improvements the OPP can make to reduce injury.
- **Enforcement** - included approximately 11,000 Provincial Offence Notices, 96 impaired arrests, 156 driver licence suspensions issued and 154 drivers were charged with driving while under suspension. (*Intercept involves several police vehicles utilizing RADAR or LIDAR within a targeted area*)

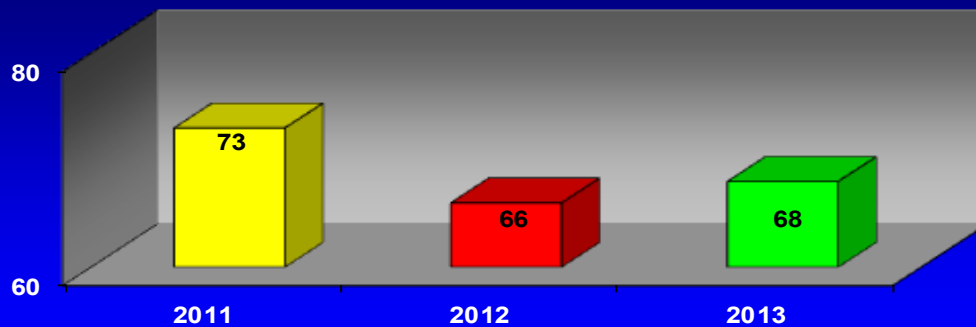
## Total PI's per Month



# Lambton Traffic & Marine

	JAN	FEB	MAR	APR	MAY	JUN	JUL	AUG	SEP	OCT	NOV	DEC
PI 2011	3	3	2	7	7	9	15	7	7	4	6	2
PI 2012	4	4	5	6	4	3	6	11	4	4	10	5
PI 2013	9	6	4	2	7	9	5	8	8	3	1	6

**Total Personal Injury Collisions**



	2011	2012	2013
Total Personal Injury Collisions	73	66	68

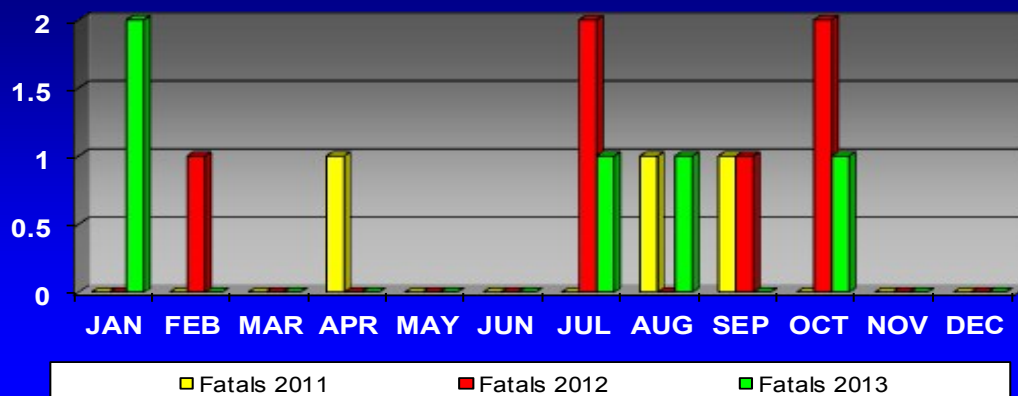
## Fatal Motor Vehicle Collisions

2013 had 5 fatal collisions, one less fatality over 2012. Two of the collisions were in the month of January and one of the collisions was a pedestrian struck on Confederation Line. Two others were single motor vehicle collisions.

Further information on each collision is listed below.

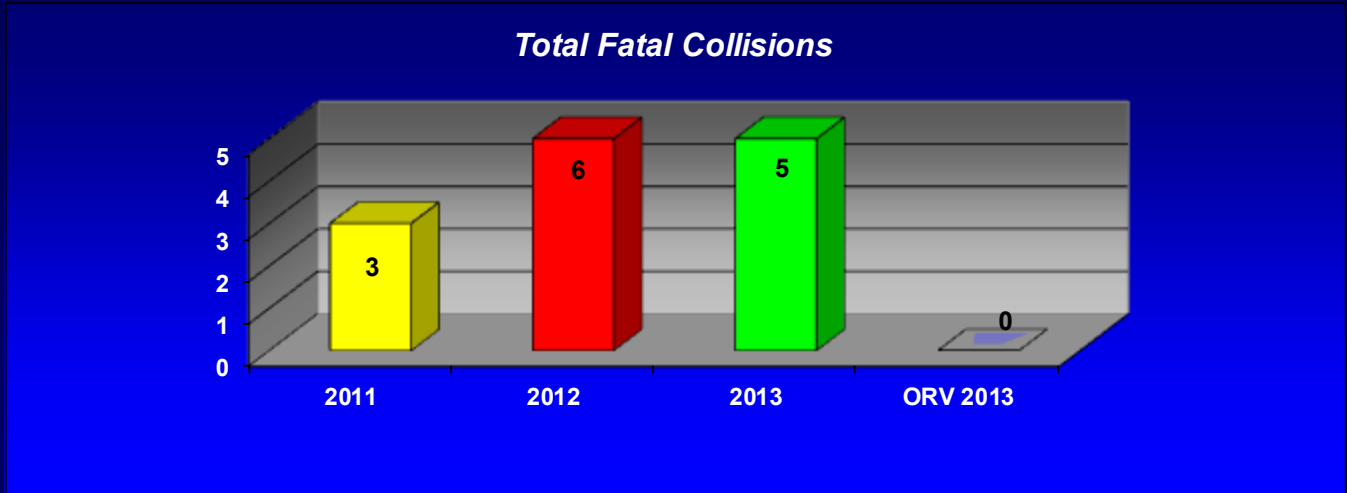
**NOTE:** these tabled totals are for Lambton County roads only and do not include other areas or Provincial Highways.

**Total Fatals per Month**



	JAN	FEB	MAR	APR	MAY	JUN	JUL	AUG	SEP	OCT	NOV	DEC
Fatal 2011	0	0	0	1	0	0	0	1	1	0	0	0
Fatal 2012	0	0	0	0	0	0	2	0	1	2	0	0
Fatal 2013	2	0	0	0	0	0	1	1	0	1	0	0

# Lambton Traffic & Marine



	2011	2012	2013	ORV 2013
Total Fatal Collisions	3	6	5	0

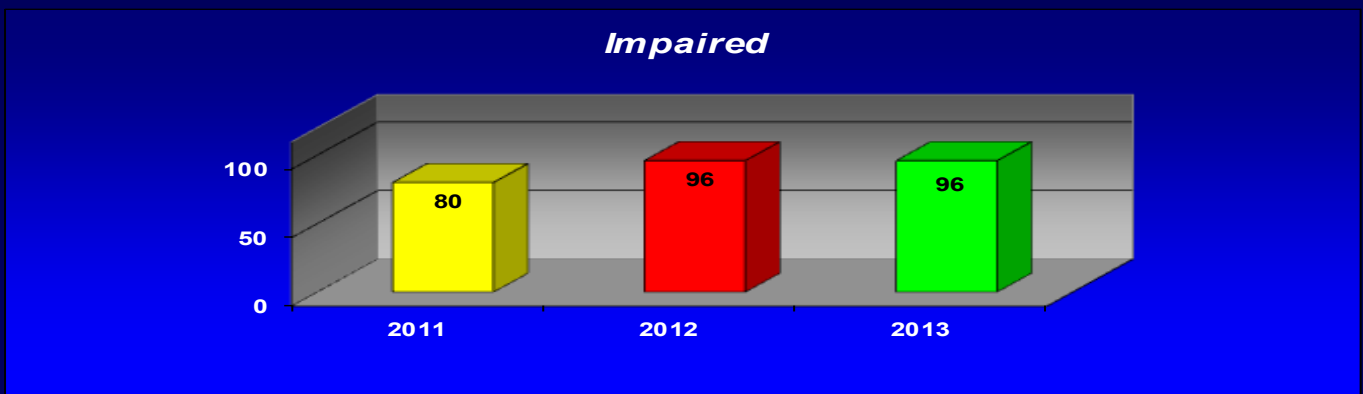
## Status of Fatal Collisions in 2013:

- 14<sup>th</sup> of January 2013, Plympton - Wyoming – Intersection of Churchill Line and Mandaumin Road, tractor / trailer vs car.
- 23<sup>rd</sup> of January 2013, Plympton – Wyoming – Intersection of Forest Road and Petrolia Line.
- 14<sup>th</sup> of July 2013, Plympton - Wyoming – A pedestrian was struck while on Confederation Line west of Plowing Match Road.
- 25<sup>th</sup> of August 2013, St. Clair Twp. – Single motor vehicle was traveling north on Telfer Road when it lost control entering a culvert.
- 30<sup>th</sup> of October 2013, St. Clair Twp. – Single motor vehicle was traveling south on St. Clair Parkway in Port Lambton when it left the roadway and entered the St. Clair River striking a dock.

## Impaired driving

Impaired driving, (Alcohol or Drugs) arrests was at 96 and 1 further arrest for impaired by drug. This remained the same as 2012 which is concerning but our collisions involving alcohol were reduced from 43 in 2012 to 19 in 2013.

Lambton OPP remains committed to taking these drivers off our roads and deters those who consider this acceptable. Education, RIDE programs and general enforcement still prove to be the best tools to combat this serious problem.



	2011	2012	2013
Impaired	80	96	96

# Lambton Traffic & Marine

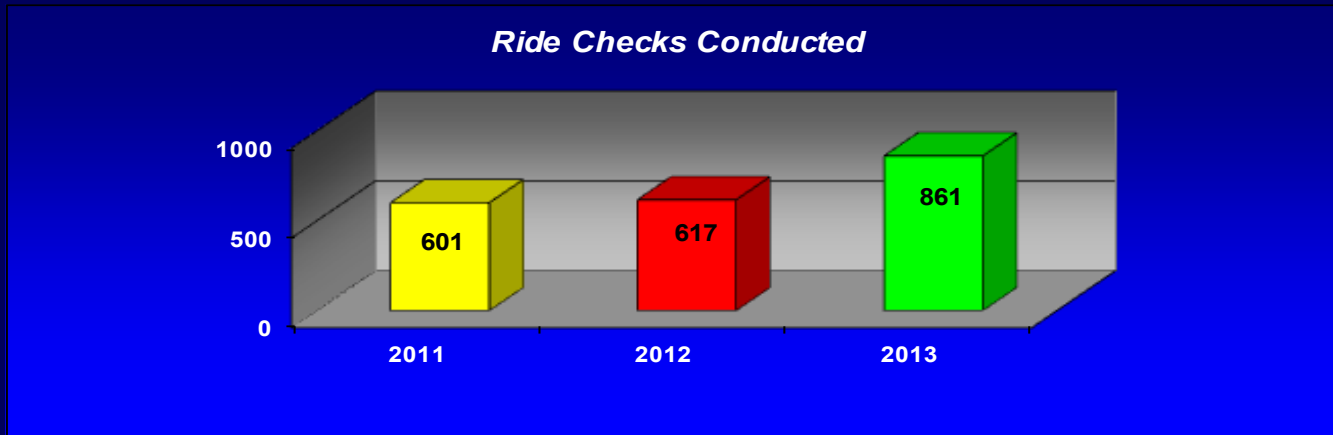
## RIDE Checks

Checks are a regular part of daily patrol and in conjunction with the "Funded" RIDE checks, sponsored by MADD and the Government of Ontario.

2013 funded RIDE again targeted known dates and weekends that historically represent an increase in alcohol related driving. Total RIDE checks have increased from year to year.

3, 7 and 30 day suspensions are also a target for RIDE initiatives.

Young and Novice drivers are also checked at these stops and these types of suspensions are being issued.



	2011	2012	2013
Ride Checks	601	617	861

Kicking off the 2013 Festive season Lambton conducted a Large RIDE on Highway 40 at the Lambton / Chatham-Kent border. This involved Lambton OPP, Chatham OPP, OPP Mobile Command Unit, Chatham-Kent Police Service and MADD Sarnia Lambton Chapter. These efforts continue throughout the year. Lambton detachment will apply for and is expected to receive an Ontario Government Grant again in 2014.

## Marine

Season runs between May and October. Lambton OPP utilizes 3 vessels for its patrol of southern Lake Huron and the St. Clair River.

- These include a 32 foot Hike, 23 foot Seaswirl and a 17 foot Harbourcraft.
- The marine unit has two full time dedicated officers and 9 other trained officers available to respond to marine related incidents.
- 3 Students are sponsored and funded through the Student Enrichment Program of the Ontario government and assist in the operation of this unit.

The primary mandate is the enforcement of Criminal, Provincial and Canada Shipping Act laws on our waterways. The marine unit is tasked with several annual events such as the St. Clair Offshore Boat Races, Mackinac Sail Races, Fireworks and other various events. The Marine Unit also conducts search and rescue under the control of the Canadian Coast Guard. Recovery of persons or evidence is done with the assistance of the OPP Underwater Search and Recovery Unit "USRU".

The marine unit committed a total of 806 vessel hours of water patrol for the 2013 season which is on the average for each year. There were 64 marine calls for service during the season and 17 charges were laid. 95 warnings were issued for various minor infractions during the same time period.

# Lambton Traffic & Marine

## Marine Events included:

- 2 major off shore boat races in St. Clair Twp. and Sarnia / Point Edward
- Jobbie nooner gathering off Seaway Island
- Floatdown starting in Port Huron with people floating down the St. Clair river
- Fireworks off Sarnia and Grand Bend
- Long weekend events
- Cops Kids and Canadian Tire event

Hours water patrol: 806 (includes all aspects of patrol)

Marine calls: 64

Charges: 23

Vessel checked: 608

Cottage checks 78 (Includes both Stag and Fawn Island)

## Lambton OPP marine unit and USRU assisted in 1 fatal water incidents:

- Assisted Walpole police service with the search and recovery of one victim

Lambton OPP remains committed to reducing injury and death on both our roads and waterways.

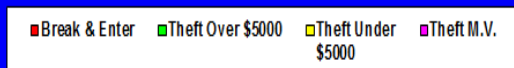
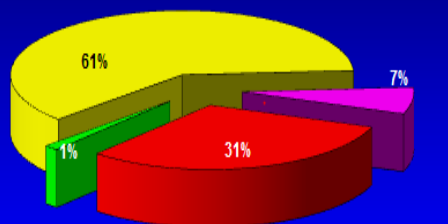


# Lambton Street Crimes



Year End Actual Offences				
	Break & Enter	Theft Over \$5000	Theft Under \$5000	Theft Motor Vehicle
Total Reported	135	6	267	29
Total Cleared	46	2	92	12

## 2013 Year End Overview of Property Offences



## 2013 Points Of Interest

The following are some of the long term solutions implemented to reduce the number of break and enters in Lambton County and increase the number of cleared incidents, contributing to the successes reflected in the statistics provided:

Relationship building with our neighbouring Police Services were strengthened during 2013 which resulted in a very successful Joint Initiative between the Sarnia Police and the Lambton Street Crimes Unit which resulted in numerous persons charged with property and CDSA related charges. Regular communication with the Chatham-Kent Police and our neighbouring OPP Detachments has also assisted our investigators greatly.

	Number Cleared			
	Break & Enter	Theft Over \$5000	Theft Under \$5000	Theft - Motor Vehicle
JAN	4	0	4	1
FEB	4	0	11	2
MAR	0	0	4	0
APR	1	0	2	0
MAY	3	1	4	0
JUN	1	0	21	1
JUL	8	0	13	2
AUG	5	0	10	2
SEP	14	1	14	1
OCT	2	0	5	2
NOV	2	0	4	0
DEC	2	0	0	1
<b>Total</b>	<b>46</b>	<b>2</b>	<b>92</b>	<b>12</b>

### Theft Under \$5000

There was a 38% decrease in theft under occurrences in 2013 as compared to 2012. There was a 34% clearance rate of Theft occurrences in 2013 as compared to 22% in 2012.

### Theft of Motor Vehicles

The majority of the stolen motor vehicles consist of off road vehicles that are easy to move and sell. Despite the challenges of investigating this type of offence 41% were cleared.

	Actual Offences			
	Break & Enter	Theft Over \$5000	Theft Under \$5000	Theft M.V.
JAN	8	0	12	2
FEB	9	1	22	2
MAR	14	0	15	1
APR	10	0	10	2
MAY	9	2	26	2
JUN	7	1	41	3
JUL	16	0	37	5
AUG	12	0	50	6
SEP	14	1	14	1
OCT	7	1	21	4
NOV	9	0	12	1
DEC	20	0	7	0
<b>Total</b>	<b>135</b>	<b>6</b>	<b>267</b>	<b>29</b>

### Break & Enter

Lambton County Detachment is reporting a substantial decrease in year to year comparison in Break and Enter Offences (135) in 2013, in comparison to (213) in 2012.

The clearance rate in 2013 for break and enter occurrences (22%), which is a slight increase from 2011.

### Theft Over \$5000

There is a 33% clearance rate of theft over \$5000 occurrences (2 of 6). The occurrences are scattered over the county.

# School Resource Officers



The Ontario Provincial Police- Lambton Detachment, has allocated two full time School Resource Officer positions. These Officers are assigned to liaise with two Secondary Schools and twenty-five Elementary Schools located within Lambton County. Officers regularly attend schools and participate in emergency training exercises, conduct presentations and provide support to front line officers with ongoing investigations involving local youth. The Lambton Kent District School Board Staff and Managers have indicated that the presence of the School Resource Officers within their schools has proven successful.

The School Resource Officers continue to maintain a close working relationship with our community partners such as Rebound and other youth service providers in order to facilitate referrals and diversionary programs. During the 2013 calendar year our Officers made more Rebound referrals than any other organization in Lambton County. Officers regularly monitor young persons to ensure compli-

ance of court orders and judicial releases. Officers continue to participate within a multi-disciplinary team designed to monitor the progress of high risk/violent youths in our communities. In 2013 Officers attended training in order to receive certification in Violence Threat Risk Assessment.

As a new initiative and with the assistance of the Community Service Officer (s), our School Resource Officers have been attending area Youth Group Home facilities in order to facilitate a proactive approach in dealing with high risk repeat offenders located within these facilities. Acting within the guidelines of the Youth Criminal Justice Act and in consultation with the Crown Attorney Office, our Officers have been successful in following youth related legislations as shown by the percentage of referrals in relation to actual criminal charges being laid against our youth.

## 2013 Points of Interest

Youth directly involved in calls:

**224**

Highest month of youth involved calls:

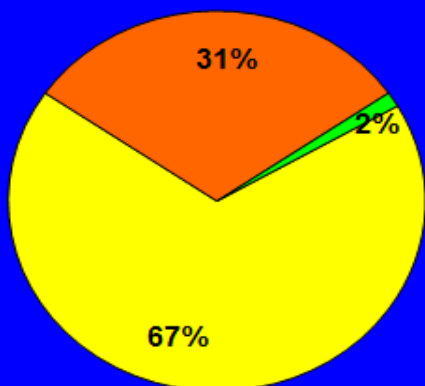
**June/July**

Lowest month of youth involved calls:

**March/August**

Total Youth Charged with an offence:

**73**



- Youths cautioned and warned
- Referrals to Rebound
- Other Referrals

**Youth Involved Crime 2013**  
**Charged (73) Diverted (78)**



# Community Services & Media Relations



Total Number Community and School Presentations = 259

School Presentations	2013
VIP/OPP KIDS	72
Community Helper	6
Bullying	12
Internet safety Children - (Does not include VIP/KIDS)	18
Drugs and Alcohol Children - (Does not include VIP/KIDS)	3
Online Safety - Secondary Schools/College	6
Ontario Early Years Visits	4
Child General Safety	14
Bicycle Safety	3

Community Presentations	2013
Seniors Fairs - Displays	6
Seniors Safety	9
Youth Talks/Presentation/Bullying	3
Child Seat Clinics/Workshops/Training	11
Drugs and Alcohol	9
General Safety Events/Presentations	10
Online safety	7
Bicycle Safety / Rodeo (Non School)	7
Women Travelling Alone	2
Winter Driving	2
Drinking and Driving	3
Identity Theft	4
Career Days	3
Collision Prevention	2
Farm Safety	5
Water Safety	1
Personal Safety	3
Detachment Tours	10
TV/Radio Public Service/Talk Show Interviews	4
Brownies/Cubs/Scouts Presentations	2
Road Safety	1
Robbery/Theft/Fraud Prevention	3
Other Events	14

Committees and other Involvements
Lambton Drug Awareness Action Committee
Emergency Preparedness Day Planning Committee
OPP Retiree Planning Committee
Point Edward Optimist Anti-Bullying Program
OPP Provincial Youth Issues Advisory Committee
Racing Against Drugs
Lambton Children's Safety Village
Sarnia-Lambton Dual Diagnosis Committee
Sarnia-Lambton Child Restraint Committee
Lambton OPP Health and Safety
Special Olympics Torch Run Local Organizer
Bridgen fair Planning Committee

The Lambton County OPP Community Services/Media Relations Officers (CSO) continue to deal with media issues and to promote crime prevention and safety throughout Lambton County. Both represent the OPP on a number of committees and attend numerous school and community events and fairs during the year.

The CSOs are active in the elementary schools delivering the VIP and OPP KIDS programs. Lambton CSO's were involved with the creation of the OPP KIDS program which was officially launched in the spring of 2013. It was piloted to grade 6 students in 2 local elementary schools in May and June and is being phased in to all of the elementary schools this year to supplement the VIP program.

Lambton CSO's were involved with the Warwick Community Policing Committee and assisted with their launch of a Lock it or Lose it campaign in Watford. A

prescription drug drop off day was hosted at the Petrolia detachment in May

and was successful in getting expired medications disposed of properly. In the fall, two community presentations were held in Point Edward to discuss senior safety and drug education.



## LAMBTON COUNTY OPP

4224 Oil Heritage Road  
Petrolia, ON N0N 1R0

519.882.1011 ph.  
519.882.1014 fax